



Yale
Alumni
Nonprofit
Alliance

THE POWER OF COMMUNITY



2021

ANNUAL REPORT



The YANA Team

YANA relies on a team of volunteers and a small staff to produce all of our programs, counsel nonprofits and individuals, and bring the community together.

Board

Ken Inadomi '76, President and Founding Chair
Board Director, NYPACE

James Wendorf '73, Vice President
Executive Director, National Association of Pediatric Nurse Practitioners Principal, JHW Advising

Molly James '05 and DIV, Secretary
Deputy Executive Officer of General Convention, The Episcopal Church Center in NY

Demetris Giannoulis '94, Treasurer
Founder, CEO, Chairman of the Board, Spring Bank

Astrid Andre '94
Deputy General Counsel, Selfhelp Community Services, Inc. Adjunct Professor, New York Law School

Todd Brecher '91
Director of Strategy & Partnerships, Beloved Builders General Counsel & Senior Advisor, Strategy & Collaboration, Learner-Centered Collaborative

Andrew Burgie '87
Assistant Research Scientist, NYU College of Global Public Health

Larry Coben '79
Founder & Executive Director, Escala Initiative

Hugo Faria '86
Managing Director & Founder, Autentike Advisors

Daniel Goldman '09 and SOM
General Counsel, Scientia Ventures Senior Advisor, General Counsel, Senior Counsel, Syntax

Merle Duskin Kailas '79 and SOM
President, MK Group Productions

Rob Leighton '88 and SOM
Executive Director, iMission Institute

Marilyn Machlowitz GSAS '78 Ph.D.
Retired Director, Machlowitz Consultants Senior Advisor, DRG Talent Advisory Group

Lou Martarano '81 and SOM
Managing Director, L Martarano Consulting Services Inc.

Andrea McChristian '08
Law & Policy Director, New Jersey Institute for Social Justice

Kimberly Ueyama '16 and SOM
Chief of Staff, DREAM (formerly Harlem RBI)

Patrice Yang '97
Primary Care Physician/HIV Specialist, Care Resource Community Health Centers

Staff

Rachel Littman '91, Executive Director
Founder and President, SeeTheGaps.org

Liana Epstein '14, Communications Director
Associate Major Gifts Officer, American Indian College Fund

Marta Hodgkins-Sumner '10, Volunteer Social Media Director
Corporate Partnerships Manager, The Global Foodbanking Network

Table of Contents

YANA Chapters	04
Letter from Leadership	05
Programs and Impact	06
Financials	12
Our Supporters	13



66%

**of Yale Alumni Are Involved
in Social Impact Work.**

**Imagine What We Can
Accomplish If We Unite Them.**

YANA was founded to connect, support, and inspire the huge pool of Yale alumni and students striving to do good works across the globe.

Our vision is to help every single member of the Yale community engage meaningfully in public service, leaving a worldwide legacy of good in our wake.

With a community of over 9,000 individuals and organizations spanning eight decades and five continents, this vision is already becoming reality.

**It's More Than A Mission.
It's A Movement.**



Our Growing Community

Since YANA was founded in January 2011, we've established 11 regional chapters around the world, we've grown our base and members to over 9,000 mission-driven students, graduates, and community members of all ages, and we've been recognized by the Yale Alumni Association with nine consecutive Excellence Awards.

We are incredibly grateful to YANA's Chapter leaders who provide extraordinary initiatives and guidance on programming and events affecting both local and global communities.



Bay Area

Jeanne Marecek GSAS '73
Eleanor Pepples '86
(starting Jan. 2022)
Tim Sullivan '72



Chicago

Stephanie Rath '96



Colorado

Michael Mazer '78
Rachel Tibbetts '99



East Africa

John Wakumu SOM '97



Europe

Kristen Krebs-Dicks '93



New England

Joellyn Gray SOM '81
Mick Hirsch DIV '03
Michael Kurs '77
Yvonne Lodico DIV '09
Robin Noble '91



New York City

Ken Inadomi '76



Pacific Northwest

Jeff Cohen GSAS '94
Sarah Samson '97



Texas

Rachel Littman '91



Washington, D.C.

Maria Laura Acebal LAW '94
Barbara Tyran SOM '79

SOME OF THE AMAZING PROGRAMS PRODUCED BY OUR CHAPTERS:

New England

- Education in Fall 2021: Where Do We Go From Here?



- COVID-19 Vaccination: Ensuring Success (co-hosted by New England & DC, Yale Club of Houston)



Bay Area

- The Huey Newton Trial: Lise Pearlman Reflects on a World-Changing Event (co-hosted with YaleWomen NorCal)

Chicago

- Virtual Discussion with Duriel E. Harris 91, Editor of Obsidian: Literature & Arts in the African Diaspora



East Africa

- Should You Go Abroad? Social Impact Outside the U.S. (Careers in Social Impact Series)

Washington, D.C.

- Exploring Life Stories (Interactive Presentation with The Theatre Lab)



**WANT TO LEARN MORE
ABOUT OUR CHAPTERS?**

[Click Here](#)



Transforming The World. Literally.

Dear Friends and Supporters of YANA:

On behalf of the YANA staff and Board of Directors, we are pleased to share with you this 2021 YANA Annual Report.

It has become clear over the past year that more people than ever are looking for meaningful ways to give back – through a different career path, or as a volunteer, mentor, or funder – but need help figuring out where to start. At the same time, many nonprofits are so overwhelmed serving the needs of their communities that they have few resources and even less time to tend to their own internal needs; they, too, need help – with fundraising, governance, marketing, technology, human resources, and strategic planning. For both individuals and organizations, YANA is that help.

At YANA, our sole purpose is to make connections and provide education and resources for the social impact community. As a centralized network, a growing force with over 9,000 followers worldwide, and a model for other schools, we empower Yale alumni to leave a legacy of good while building an infrastructure and setting a standard of how to help those who are helping the world.

Sincerely,



Ken Inadomi '76
President and Board Chair



Rachel Littman '91
Executive Director

Even as we help other changemakers source funding, build teams, launch 501(c)3s, find opportunities, connect with mentors, tell their stories, and more, YANA is also focused on its own development. We are constantly looking for ways to do even more to catalyze the social purpose community.

YANA is now exploring how to launch a pro bono consulting program that could mobilize small teams of Yale volunteers to address the strategic needs of early stage nonprofits. And, as our sphere of influence grows, we are also envisioning sharing the YANA program model with other colleges and universities seeking to develop their own alumni-led social impact organizations.

Regardless of how we grow, YANA will always be centered on people, on service, and on how to maximize our collective impact. We will continue bringing mission-driven people together, then finding ways to inspire, uplift, and empower them to realize their visions.

We are so very grateful for your ongoing belief in our work and for your support in helping us create a world that is more equitable, inclusive, and just.

The Unmatchable Talent of the Yale Community. An Unstoppable Force for Social Good.



Programs and Impact

LAUNCHING Dreamers.

CHAMPIONING Dreams.

Improving the world is a big undertaking. Simply put, YANA's work is about making it easier.



We begin back in New Haven with nurturing mission-driven students seeking ways to serve. Through programs like the [YANA Dwight-Hall Fellowship](#), which provides funding and training for students interning at social impact organizations, **we nurture the community spirit of Yale's young idealists so their spark doesn't go out.** Recent Dwight Hall Fellows have gone on to become Rhodes Scholars, Fulbright Grantees, graduate students, journalists, writers, and PhD candidates.

GO
SOUTH

Last spring, we piloted our first-ever **fiscal sponsorship** -- of a student-created organization called [Go South](#) which connects Ivy League students to Southern-based nonprofit fellowships.

Fiscal sponsors can help young organization extend their capabilities despite limited resources and can often be **the difference between a great organization thriving and never getting off the ground.** As Go South's fiscal sponsor, YANA provides **important administrative support and serves as a vital donation pathway for supporters** seeking to make tax-deductible donations to Go South while it awaits a 501(c)(3) designation.

Beyond New Haven, YANA also serves as a resource to Yale alumni and other nonprofit professionals. On any given day, we may be **linking an alum with a meaningful service opportunity, connecting a social entrepreneur with a new network or resource, providing governance advice to a nonprofit looking to scale, and more.**

The goal is always the same: **do everything we can to put the Yale network and talent-base to work for social good.**



"I attended my first YANA webinar prior to graduating in 2020, a year marked by turbulence, uncertainty, outrage and the need for a path forward. I was so grateful for this network of Yale alumni in the nonprofit sector and have been following it ever since."



"The summer I spent in Savannah, [through the Dwight Hall Fellowship] I got to know so many people, so many organizations, so many nonprofit leaders, and got to see a lot of ways people were building community and organizing and just doing a ton of legwork on very little resources. And it gave me a vision of what I wanted to do..."



2021 Dwight Hall Fellows

Thanks to our generous funders, we were able to award [four Yale students](#) with summer social impact Fellowships in 2021 – up from three in previous years. With your support, we hope to continue to grow this program, to help more students develop their interests in public service.



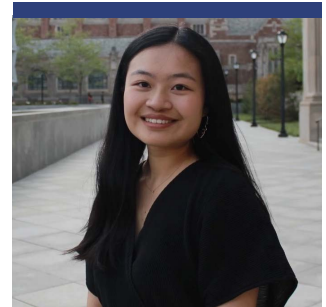
Jose Garcia '22, an Ethnicity, Race, & Migration and Education Studies major and aspiring public interest child advocate, used his Fellowship to examine the root causes of client charges at the New Haven Office of the Federal Public Defenders.



Nathan Kim '22, a double major in Ethnicity, Race, & Migration and Statistics & Data Science, used his award to intern with the Anti-Eviction Mapping Project, a counter-cartography group fighting predatory housing practices.



Charlie Tran '22, a History of Science and Medicine major, Global Health Scholar, and 5-year BA/MPH candidate in Social & Behavioral Sciences, used his stipend to intern at Fair Haven Community Health Care, providing services that bridge gaps between the social and medical needs of patients.



Chie Xu '22, a Humanities major, used her award to support ongoing work at the Orleans Public Defenders office, where she examined surveillance practices and inequalities in criminal justice record-keeping systems.

Celebrating Service:
5 Years of the YANA-Dwight Hall Summer Fellowship

A Panel Conversation with:



OLIVIA PASCHAL '18
History PhD Candidate, UVA



TRINH TRUONG '19
Cofounder, Bakhita Center



LUISA GRADEN '20
Fulbright Grantee in Madrid



Repairing The World One Leader At A Time

LOOKING FOR RESOURCES?

[Click Here](#)



EXTENDING Reach. ACCELERATING Results.

Because we know that successful social impact ventures require more than a good heart -- more resources, more voices at the table, more hands on deck, more money -- YANA also serves as a **crucial connector, helping nonprofit organizations get seen, heard, and supported** so they can launch or scale their efforts.

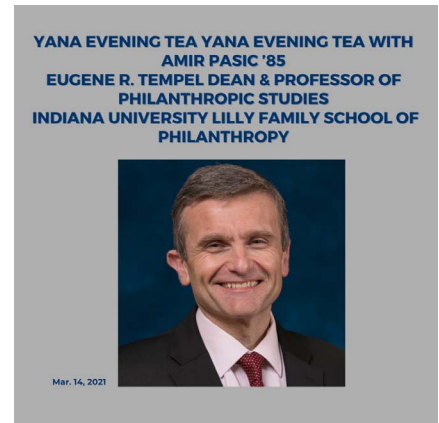
YANA [Spotlights](#) raise nonprofits' visibility, **illuminating and promoting promising ventures**. On our website, in our newsletters, and through scores of [Webinars](#) and [Panel Discussions](#), we **bring innovative, young enterprises to the attention of sponsors, donors, and volunteers** who can give them wings.



At our [Evening Teas](#), we **host discussions with leading experts advancing positive social change, creating desperately needed forums for the socially conscious community to talk, ask questions, and share** about the changes they are working toward in the world.



By linking members of the Yale community with one another and with resources to support their social impact efforts, YANA is **leveraging the vast knowledge, skills, and experiences of the wider Yale community to multiply impact**.



"I have been consistently excited by the interdisciplinary, cross-sector, and thoughtful programming that (YANA) has provided to the Yale community and beyond. From the influence of public arts to tracking off-the-beaten-paths of Yalies, I think YANA excels at drawing lateral connections across the amazing work of the Yale community and its organizations."

Better Connections For The Greater Good.



"This was an excellent program. I learned new information and was reassured listening to these experts talk about the diligent, committed work they do that doesn't make the news... In a time when our own field of vision seems to be small and focused on our daily adjustments and worries about the pandemic, it was an excellent reminder of why we must step back and take a global view."

**STAY UP TO DATE ON
OUR PROGRAMS!**

[Click Here](#)



REIMAGINING What's Possible. TRANSFORMING The Future.

YANA is uniquely positioned not only to nurture a new generation of Yale change agents, but also to give experienced alumni inspiring ways to contribute.

On an individual level, YANA helps community minded alums engage with public sector work when and how they feel ready -- as volunteers, Board Members, Executive Directors, entrepreneurs, and more. Too often, alumni long to do pro bono work or to pivot careers toward social good, but they don't know where to start or how to recast themselves. YANA plays

a vital role in **shaping, sourcing, and creating opportunities for alumni to share their skills, time, and expertise with the public sector.**

YANA's vibrant [Webinar](#) series also mobilizes Yale's incredible talent pool to advance knowledge and scholarship about critical social issues. Bringing alumni and other experts together to explore today's evolving problems, we enable social impact warriors to connect with causes, expand perspectives, and tackle pressing issues.



"I have found YANA invaluable to my nonprofit board service, in particular, allowing me to establish a network in the nonprofit space, facilitating contacts with nonprofit organizations with issues similar to the one I serve, and providing thought leadership in the governance and philanthropy areas."

PHILANTHROPY'S ROLE IN ADVANCING RACIAL EQUITY
Virtual Town Hall



MARCO DAVIS '92
CEO
Congressional Hispanic Caucus Institute



ANDREA MCCHRISTIAN '08
Law & Policy Director
New Jersey Institute For Social Justice



ANTONY BUGGE-LEVINE '96
CEO
Nonprofit Finance Fund

June 30, 2021 | 6:00 - 7:00 PM ET
Online event hosted on Zoom platform



FINDING MEANINGFUL SOCIAL IMPACT ENGAGEMENT IN LATER YEARS: OPPORTUNITIES & OBSTACLES



MARC FREEDMAN SOM '84
President, CEO, Founder
Encore.org



JODY SHUE, MPH
Executive Director
AgeFriendly.org



ASHTON APPLEWHITE
Author & Activist
This Chair Rocks



BECCA LEVY, PHD
Prof., Yale School of Public Health
Yale Univ. Dept. of Psychology

Dec. 1, 2021



Meeting the Moment. Creating the Change.



More than ever before, I believe that we are recognizing that real social impact is driven by the communities who have the clearest view and understanding of the failures of our current systems. Even as we fully engage in the important issues of our time, we do so in the realization that as Yale alumni -- a group frequently well-served by those systems -- we need to adopt a responsive, listening orientation to achieve meaningful, sustainable change. I am excited to be a part of this revolution in thinking."

**COULD YOU USE SUPPORT/
ADVICE OR DO YOU HAVE
EXPERIENCE TO SHARE?**

[Click Here](#)



YEAR AT A GLANCE

2021 Program Snapshot

The need for best-practice sharing, innovative thinking, and community building is greater than ever. During 2021, YANA was busy **convening diverse and inclusive Yale audiences around a wide variety of topics and collaborating with social entrepreneurs, thought leaders, and Yale's schools and offices** from all areas of philanthropy to transfer capacity and inspiration to the people and the organizations doing the hard work of repairing our world.

In 2021, YANA chapters around the globe sponsored more than 40 events and webinars, which were attended by over 1,200 people. Every program remains available on demand via [YouTube](#) and [Buzzsprout](#).

- » Avoiding Nonprofit Burnout
- » Building Movements from the Margins
- » Bylaws and Governance Best Practices
- » Global Models for Questions of Reparations
- » De-Mystifying Non-Profit Board Service
- » Education in Fall 2021: Where Do We Go from Here
- » Empowering Underserved Youth Through Sports
- » Envisioning the Future of the American City
- » Exploring Work Towards Peace and Anti-Hate
- » Faith and Social Impact Work: Surprise Blessings During COVID-19
- » Honoring Women Helping Women
- » How Traditional Wisdoms and Faiths Guide Social Justice Work
- » Introduction to Areas of Nonprofit Practice
- » Launching a Successful Capital Campaign
- » Leveling The Playing Field of Opportunity
- » Meaningful Engagement in Later Years
- » The 100th Anniversary of The Tulsa Race Massacre
- » Pandemic Response: Ensuring Vaccination Success
- » Philanthropy's Role in Advancing Racial Equity
- » Pivoting Your Career from the Private Sector to the Public
- » David Blight, the Yale Inst. for Study of Slavery, and Grace Farms Foundation: Design for Freedom
- » Public Art: Definitions, Roles, Access
- » The Role & Support of Individual Artists in Society
- » Social and Racial Justice: Advancing Prison Reform
- » Social Impact Networking
- » Social Impact Careers Outside the U.S.
- » Social Impact Work in New Haven
- » Storytelling Through Architecture: Lessons for Nonprofits
- » Tea and Conversation with Duriel Harris on the U.S. Black literary publishing ecosystem
- » Tea and Conversation with Dean Amir Pasic on the history and role of philanthropy
- » Using Life Stories in Social Impact Work
- » Using Technology to Enhance Social Impact



PAYING HOMAGE TO AFRICAN AMERICAN HISTORY



REGINA BAIN '96, '01 MFA
Executive Director
Louis Armstrong House Museum



JEROME HAFERD ARCH '10
Adjunct Asst. Prof., School of Architecture, Planning & Preservation
Co-Founder, BRANDT HAFERD



DON ROMAN '71
Board President
Steffen Thomas Museum of Art

Feb. 24, 2021



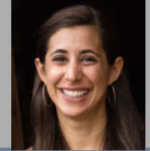
SOCIAL JUSTICE: ADVANCING PRISON REFORM



ZELDA ROLAND '08, '16 PHD
Founding Director
Yale Prison Education Initiative



UZOMA 'ZOE' ORCHINGWA '21 LAW & SOM
Co-Founder & CEO
Ameelio



LAUREN FINE '06
Co-Founder & Co-Director
Youth Sentencing & Reentry Project

Apr. 28, 2021



HOW TRADITIONAL WISDOMS & FAITHS GUIDE SOCIAL IMPACT WORK



DR. W. FRANKLYN RICHARDSON DIV '90
Senior Pastor
Grace Baptist Church



PETER GIBLIN '92
Co-founder & Network Relations Manager
LeClair Foundation



RABBI BRAD HIRSCHFELD
President
National Jewish Center for Learning & Leadership

Oct. 25, 2021

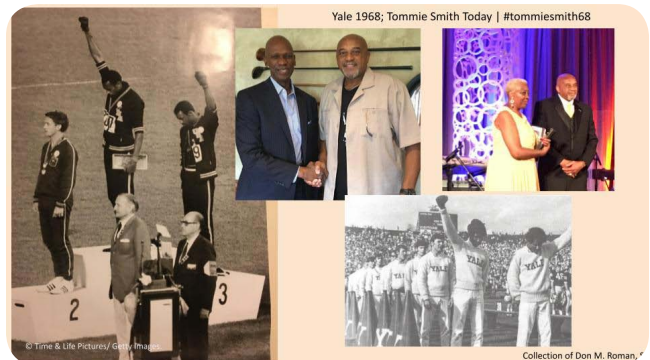


GOVERNANCE BEST PRACTICES: REVISITING YOUR ORGANIZATION'S BYLAWS



with
Sara Goldsmith Schwartz '87
Founder and President of Schwartz Hannum PC
May 10, 2021

PUBLIC ARTS
POVERTY ALLEVIATION
What's it like to work in...?
An Introduction to Social Impact Areas of Practice
February 4, 2021
ENVIRONMENT
GOVERNMENT



Yale 1968; Tommie Smith Today | #tommiesmith68

© Time & Life Pictures/ Getty Images

Collection of Don M. Roman, Jr.



THE YALE ALUMNI NONPROFIT ALLIANCE

YANA WEBINAR SERIES

unpacking the dimensions of social impact

Each session will be 1 hour: a 40-minute presentation, followed by 20 minutes of Q&A

Webinars hosted on Zoom Platform
Registration required for login instructions

yalenonprofitalliance.org/programs/webinars



Alone, We Each Do A Little. Together, We Are Doing So Much.

2021 Financials

Together, we raised over \$79,000 to lift up others in so many ways...

We linked a Yale Divinity School grad providing services to trafficking victims in Nepal to a Colorado-based alum with Nepalese nonprofit background and connections.

We connected the program director of an immigrant women's shelter organization in Dallas to a Dallas-based Yale intern deeply connected to the same immigrant community AND to an alumni Board Member of Havenly, a Yale student start-up serving immigrant women in New Haven.

We supported four Yale students in full-time summer social impact internships.

We introduced countless student-led social enterprises to alumni across the country, and helped alumni nonprofit leaders find experts, advisors, and resources all over the world.

We made significant investment in our data infrastructure to better understand and meet the needs of our members through programming and resource matching.

ASSETS

Current Assets

Cash	
Spring Bank Checking	35,666.11
Prepaid Expenses	606.64
Undeposited Funds	3,847.00
TOTAL ASSETS	\$40,119.75

LIABILITIES AND EQUITY

Liabilities

Accounts Payable	10,629.53
------------------	-----------

Equity

Without Donor Restriction (Unrestricted)	46,585.89
Net Income	-17,095.67

Total Equity	\$29,490.22
---------------------	--------------------

TOTAL LIABILITIES AND EQUITY	\$40,119.75
-------------------------------------	--------------------

Income



■ Indirect Giving (DAFs, incl. Network for Good)	49%
■ Individual Direct Giving	30%
■ Foundations	11%
■ Yale Alumni Association	6%
■ Administrative	4%

Expenses



■ Contractors - Staff & Other Consultants	33%
■ Data Infrastructure	26%
■ YANA-Dwight Hall Summer Fellowship	18%
■ Nonpersonnel Expenses	10%
■ Website Upgrade & Maintenance	7%
■ Legal & Accounting Services	6%



Thank You to All Our Supporters



YANA simply wouldn't exist without its supporters and contributors. Everything we do is made possible because of your generosity, enthusiasm, and dedication.

Listed below are our donors who have given financially over the 12 months ending December 31, 2021.

**Denotes support for the YANA-Dwight Hall Fellowship.*

Game Changer (\$1200+)

- The Aurelian Honor Society*
- Deborah Brittain*
- Andrew Burgie *
- Larry Coben
- Hugo Faria*
- Demetris Giannoulis
- Ken Inadomi*
- Molly James*
- Merle Duskin Kailas
- Robert Leighton and Maureen Weaver*
- Martin Lewis
- Marilyn Machlowitz
- Louis Martarano*
- Natalie Silverstein*
- James Wendorf and Barbara Fiorino*
- The Wisdom Foundation
- Yale University

Innovator (\$600-1199)

- Todd Brecher*
- Sara Caples
- Charlotte Foundation
- Alison Gardy
- Lillian Gray
- Joan O'Meara Winant
- Surdna Foundation, Inc.
- Dave Wiley
- Patrice Yang
- Alan Yuspeh*

Patron (\$250-599)

- Tina Allen
- Astrid Andre
- John Bacon*
- Lydia Boisi
- Lise Chapman
- Don Chen
- Sunny Chu*
- Joseph DeNicola*
- Frederick Dettmer
- Thomas Doremus*
- Daniel Goldman

- Joellyn Gray
- Vera Lattimore-Rowe*
- Patricia Littman*
- Rachel Littman*
- James E Mann*
- Marice (Marci) McCoy*
- Dasia Moore*
- Valerie Popp
- Geoffrey Sears*
- Sally Sloan
- Robert Staffaroni
- Maxim Thorne
- Kim Touyinhthiphonexay*
- John Woyke

Advocate (\$120-249)

- Stephen Blum
- Alec Cecil
- Adam Cohen
- Jeffrey Cohen
- Catherine Crystal*
- Lucy Cummings
- Tim Delaney
- Jane Eddy*
- Lois Fishman
- Samantha Heffner
- Peter Heller
- Mick Hirsch
- Vivien Hoexter
- Celia Imrey
- Ivar Larsen*
- KD Leka*
- Miranda Massie
- Buzz Mauro*
- Barbara Munck
- Robin Noble*
- Victoria Ordín
- Amir Pasic
- Michael Pennett
- Richard Raiselis
- Ted Robb
- George Schutzer
- Amy Solas
- Suzanne Solensky*
- Steven Swerdlow*

- Rachel Tibbetts
- Kimberly Ueyama*
- Caroline Van
- William Ward
- Colin Weil
- Brendan Woo*

Friend (\$5-119)

- Crystal Aldape*
- Nancy Alexander
- Kryn Anderson
- Patricia Breech*
- Jo Brooks*
- Miles Calabresi*
- Stephen Campbell*
- Steven Carlson*
- Catherine Chen
- Richard Davis
- Brian Edwards
- Liana Epstein
- Philip Falcone*
- Shehla Fazili
- Albert Feuer
- Matt Gabbard
- Laura Garcia
- Shawn Garrett
- Melissa Garza
- Rob Greenly
- Faisal Hamid
- Sarah Hanck
- Angela Harrell
- Erin Holder
- Grace Hsieh
- Stewart Hudson
- Robert & Peggy Inadomi
- Michael Jacobson
- Nina Jaroslaw*
- Christopher Jennings
- Leah Khaghani
- Arlene Kimata
- Nancy King*
- Tammy Kornfeld
- Michael Kurs
- Yang Li
- Julie Lin
- Yvonne Lodico
- Patricia Lydon*
- Harry Manhoff
- Laura Martinez
- Margot McMahon*
- Anne McPherson
- Myra Miller*
- Austen Moore*
- Jean Mulroy
- Olivia Paschal*
- Natasha Patel
- John Pattillo
- Eric Peterson*
- Kerry Price
- Ellen Priest
- Ann Rakoff
- Andrew Richter
- Holly Robinson*
- Nancy Rohrer
- Sam Rubin
- Neline Sahagun
- Jason E Sandler*
- Deena Schneider
- Joyce Schroeder
- William Schwarze
- Barbara and Robert Sherman
- Rhonda Singer
- Ron Sipherd*
- Jane StClair
- Jonathan Stearns
- Timothy Sullivan
- Eileen Tang
- Melina Taylor
- Danielle Kristine Toussaint*
- Jane Veron
- Amber Walsh
- Alissa Wassung
- Osamu Watanabe
- Camele-Ann White
- Suzanne Wittebort*
- Ethan Young
- Abdul-Razak Zacharia*

Yale Alumni



We Need A Network To Change The World.

YANA Is Building It.



Connecting and Catalyzing for Global Good

Yale Alumni Nonprofit Alliance
607 West End Avenue, #9A, New York, NY 10024
www.yalenonprofitalliance.org



yale alumni nonprofit alliance



@yalenonprofit



yale alumni nonprofit alliance



@yale_nonprofit

